
Release Notes – Zebra ET5X Windows Battery Firmware – ULPMC_64_0D_ZE.zip

Contents

[Introduction](#)

[Package Details](#)

[Device Compatibility](#)

[Installation Instructions](#)

[Release Date](#)

Introduction

This release contains following software package which is compatible for ET5X Windows Tablets.

- ❖ **ULPMC_64_0D_ZE.zip**
- ❖ **Note:** This Firmware Package **ULPMC_64_0D_ZE.zip** is applicable only for Windows SKUs

This release package contains following fixes and patches.

- **Battery Firmware Patch: Battery firmware monitors battery temperature and adjusts the charge being applied to the battery until proper operating conditions are reached.**

Package Details

ULPMC_64_0D_ZE.zip

Note: This latest CFE package includes previous and new SPR fixes.

Device Compatibility

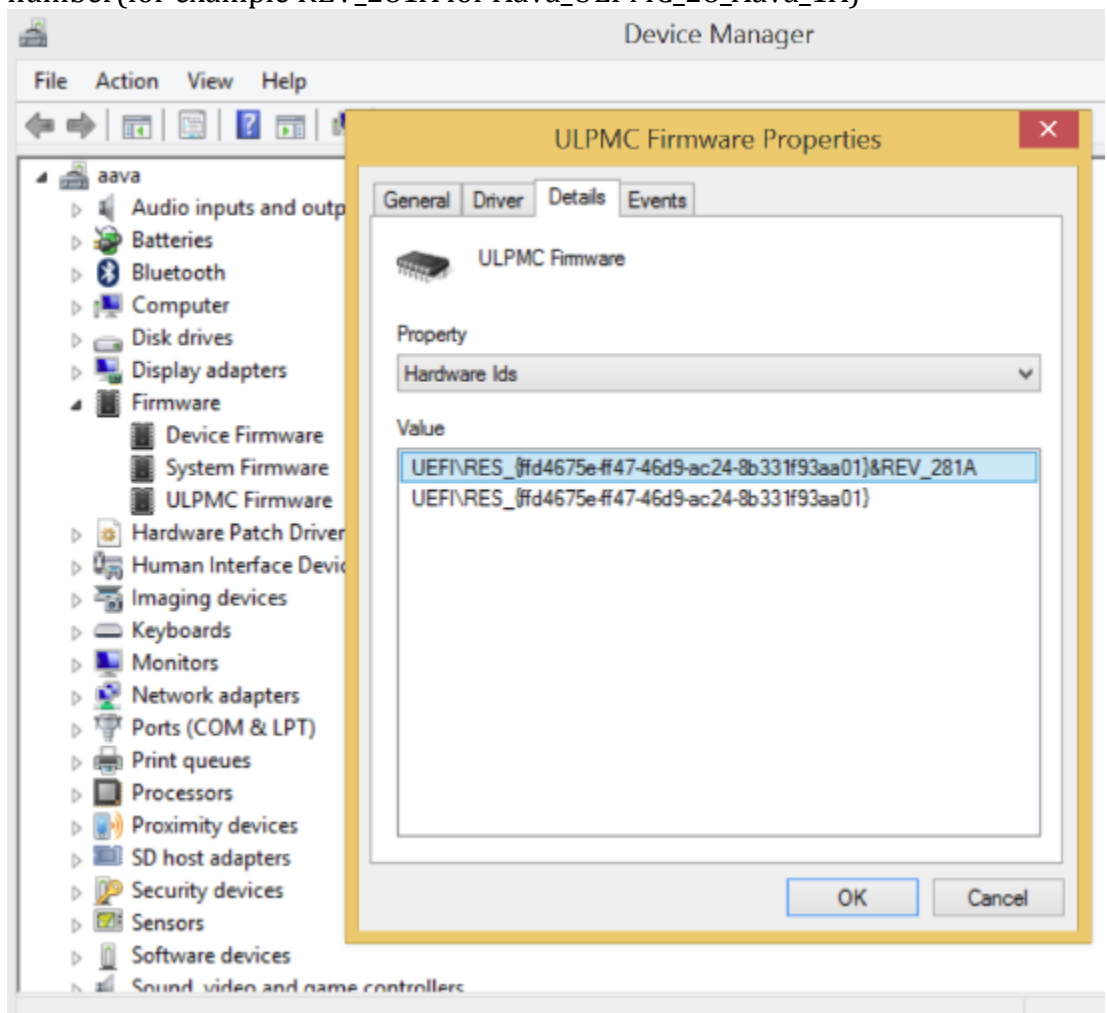
This software release has been approved for use with all ET5X Windows Devices (both Win8.1 and Win10).

Installation Instructions

From Windows with DFU

NOTE: Aava_bios_inari_028 or newer is needed for the update from Windows.

1. Right click ULPMCDFU.inf
2. Select Install
3. When Windows prompts for restart select “yes”
4. After install & restart you can check if install was successful from device manager:
 - Firmware->ULPMC Firmware yellow bang indicates problem.
 - And Firmware->ULPMC Firmware ->Properties->Details->”Hardware Ids” last parameter beginning with REV tells you current version number(for example REV_281A for Aava_ULPMC_28_Aava_1A)



Inject driver to Windows Image file

1. Mount "os.wim" to a folder
 - a. `md c:\mount`
 - b. `dism /mount-wim /wimfile:d:\os.wim /index:1 /mountdir:c:\mount`

2. Add ULPMC driver
 - a. `dism /image:c:\mount /add-driver /driver:"d:\ULPMC driver 1B\ULPMCDFU.inf"`

3. Unmount image
 - a. `dism /unmount-wim /mountdir:c:\mount /commit`

On the next boot after flashing the image on device ULPMC will be updated.

Release Date

Feb 2018